



A  
BLOOMING  
BRITISH  
AFTERNOON TEA

A celebratory afternoon tea with the  
Natural History Museum

*Supporting a future where people  
and pollinators thrive*



Natural  
History  
Museum

ROYAL  
LANCASTER  
LONDON

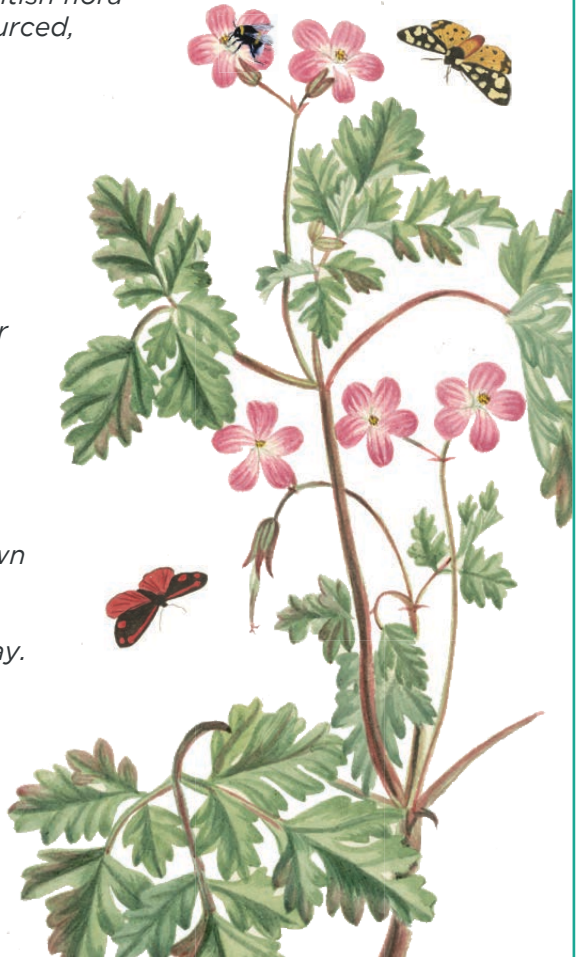
# Introduction

*Welcome to A Blooming British Afternoon Tea in collaboration with the Natural History Museum; a floral-inspired twist on a quintessentially British tradition, in a celebration of the beautiful flowers and precious pollinators on our doorstep.*

*Taking inspiration from artworks held within the Museum's archives, their newly transformed gardens that provide a haven for people and wildlife, and the idyllic 30-minute nature walk across leafy Hyde Park that brings us together, our talented pastry team have created a thoughtful menu that beautifully honours the elegance of British flora and fauna, using locally-sourced, seasonal ingredients.*

*This special collaboration combines the Museum's expertise and work to protect the natural world, with our ongoing sustainability efforts, and a shared passion for pollinators. Royal Lancaster London has been home to thousands of honey bees since 2009 when we became the first hotel in central London to install beehives on our roof; an initiative led by our very own Queen Bee, Jo Hemesley, who continues to lead our beekeeping team to this day.*

*Together, we support a future where people and pollinators thrive.*



# Prices

£49 Monday to Friday

£55 Saturday and Sunday

£30 Children's Afternoon Tea

## Make it extra special...

£15 *Nyetimber Classic Cuvee MV*

£18 *Nyetimber Rosé MV*

£16 *Taittinger Brut Reserve NV, France*

£20 *Taittinger Brut Prestige Rose NV, France*

£10 *Noughty Sparkling Chardonnay non-alcoholic sparkling wine*

£10 *Noughty Sparkling Rose non-alcoholic sparkling wine*



## Bespoke Teas

*from Camellia's Tea House*

### **The Royal Lancaster Afternoon Blend**

A bespoke blend created to complement the savoury selection of our celebratory afternoon tea. An unusual combination of timeless English Breakfast, warm woody China Keemun with the floral notes of calming chamomile. This is a tea to relax with and savour time well spent with friends and loved ones.

### **The Pollinator Blend**

Created exclusively for Royal Lancaster London, in partnership with the Natural History Museum, the Pollinator blend marries black teas from Darjeeling and China with cornflower, rose and marigold petals and the final flourish of organic bee pollen. Full of health-giving properties, the bee pollen adds a sweet honeyed note to this delightful celebration of the insects which keep Mother Nature in timeless bounty.



*Scan the QR code  
to view allergen  
information*

# A Blooming British Afternoon Tea

## SAVOURY

*A selection of traditional sandwiches*

Maize-fed chicken with bee pollen on white bread

Smoked Salmon, cream cheese and dill  
on wholemeal bread

Classic egg mayonnaise with flowering chives  
on wholemeal bread

Cucumber with salted butter on white bread



## SCONES

Warm homemade scones served with clotted cream  
and a selection of preserves



## SWEET

*A selection of pollinator-themed sweet bites*

### **Snowdrop**

Buttermilk cake, white chocolate whip ganache,  
reconstructed shortbread

### **The Ladybird**

Light vanilla mousse, caramelised apple, sablé Breton

### **The Beehive**

Honey cake, honey & crème fraiche cream

### **Rose Chafer**

Mascarpone whip, pear and blackberry compôte, brown butter cake

A discretionary 12.5% service charge will be added to your bill.

# A Blooming British Vegan Afternoon Tea

## SAVOURY

*A selection of traditional sandwiches*

Avocado and confit tomato chutney with coriander cress on wholemeal bread

Beetroot Hummus and pickled carrots on wholemeal bread

Tomato, vegan mozzarella and basil pesto on white bread

Classic cucumber on white bread



## SCONES

Warm homemade scones served with coconut cream and a selection of preserves



## SWEET

*A selection of pollinator-themed sweet bites*

### **Snowdrop**

Lemon drizzle cake, crème patisserie

### **The Ladybird**

White chocolate cream, caramelised apple, shortbread

### **The Beehive**

Maple cake, muscovado sugar and orange blossom cream

### **Rose Chafer**

Plant-based cheesecake, pear and blackberry compote, agave cake

A discretionary 12.5% service charge will be added to your bill.

# A Blooming British Children's Afternoon Tea

## SAVOURY

*A selection of miniature sandwiches*

Chicken with mayonnaise on white bread

Cucumber and cream cheese sandwich on wholemeal bread

Egg sandwich on white bread



## SCONES

Warm homemade scones served with clotted cream  
and a selection of preserves



## SWEET

*A selection of pollinator-themed sweet bites*

### **The Ladybird**

Light vanilla mousse, caramelised apple, sablé Breton

### **Chocolate Seedball**

Milk chocolate mousse, chocolate sponge

### **Butterflies & Berries**

Vanilla cheesecake, mixed red berry compôte

# Did you know...?

While honeybees get a lot of the credit, at least 1,500 insect species pollinate plants in the UK. In some parts of the world, birds, bats and even lizards get involved too!

Beetles are attracted to flat, open flowers which allow them to graze, and flowers in clusters, such as cow parsley. The flowers tend to be smelly or fragrant, because beetles navigate by a strong sense of smell.

Cereals, such as wheat and barley, rely on wind pollination but just about every other plant we eat is actively pollinated. Tomato production relies on pollination by bumblebees, as do many other crops.

Adult butterflies and moths will feed on almost any flower's nectar, but caterpillars are fussier, so try planting a variety of flowers to encourage more insects to visit your garden.

Things you can do to help:

1. Grow pollinator-friendly plants in your garden or on your windowsill
2. Let your lawn grow a little wilder
3. Build a home for solitary bees

Scan the QR code for 'How To' videos, and a digital version of our Nature Walk map.

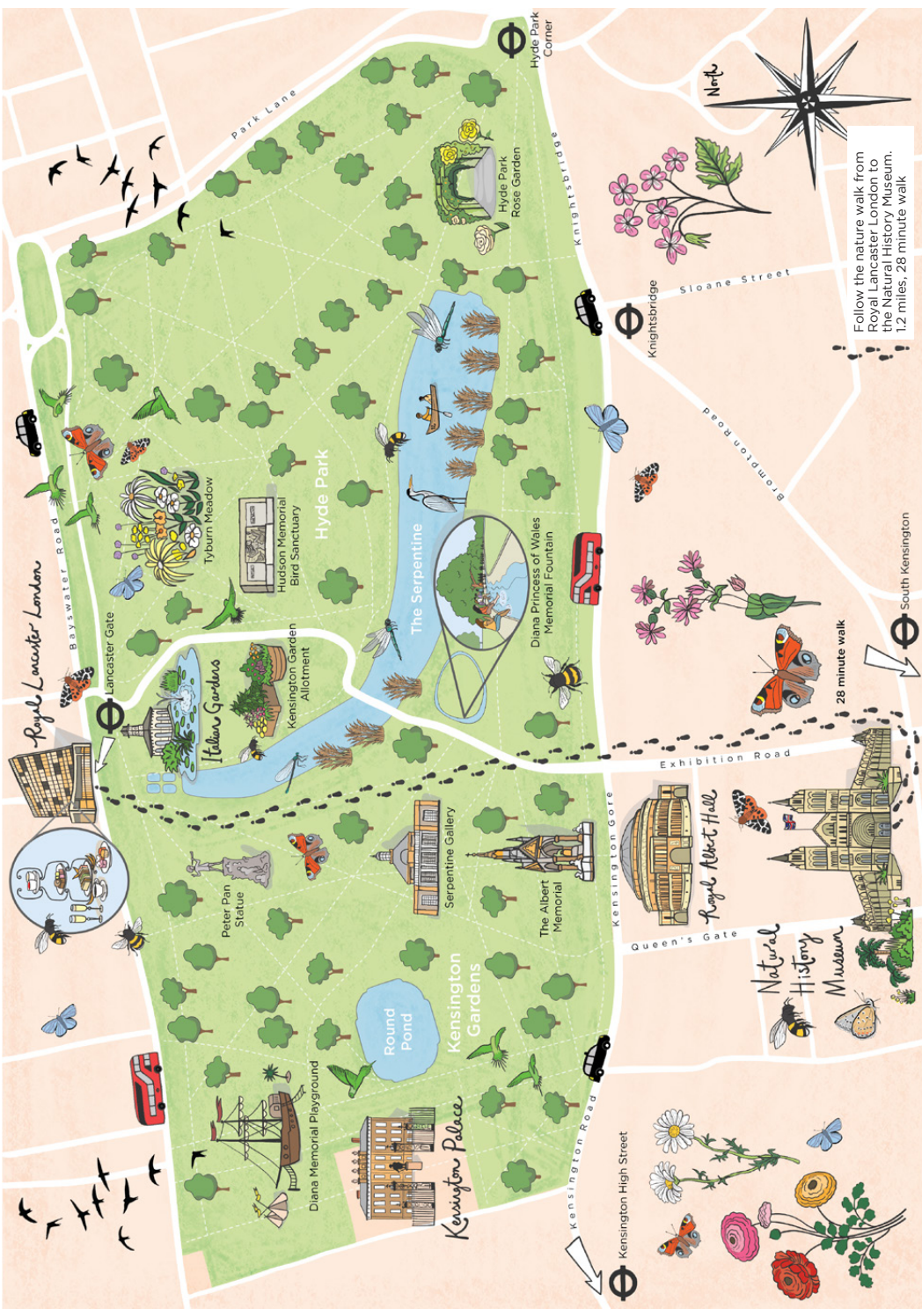


For an animal to be an effective pollinator it needs to actively visit flowers of the same species and be capable of carrying pollen on its body (often unintentionally) so that it transfers from one flower to another.

There are just 57 resident butterfly species in the UK, compared to more than 2,500 moth species.

The list of insect pollinators is long and includes many different species of bees, flies, wasps, beetles, butterflies and moths. Pollinators carry pollen with them as they move from flower to flower.





Royal Lancaster London

Park Lane

Hyde Park Corner

North

Follow the nature walk from Royal Lancaster London to the Natural History Museum. 1.2 miles, 28 minute walk

Bayswater Road

Lancaster Gate

Tyburn Meadow

Hudson Memorial Bird Sanctuary

Hyde Park

The Serpentine

Diana Princess of Wales Memorial Fountain

Knightsbridge

Sloane Street

Exhibition Road

South Kensington

Hyde Park Rose Garden

Kensington Gardens Allotment

Peter Pan Statue

Serpentine Gallery

The Albert Memorial

Royal Albert Hall

Natural History Museum

Round Pond

Kensington Gardens

Queen's Gate

Diana Memorial Playground

Kensington Palace

Kensington High Street

28 minute walk